

MANUFACTURED BY:
PRECAST STONES NY CORP
3275 GRACE AVENUE
BRONX, NY 10469
917-557-0949 Office 917200-1738
INFO@PRECASTSTONESNY.COM
PRECASTSTONESNY.COM

P.S./I.S.

PRECAST STONES
PROFILES

PROJECT:

<Project>

DRAWING TITLE:

Stones

DATE:

12/20/2025

SCALE:

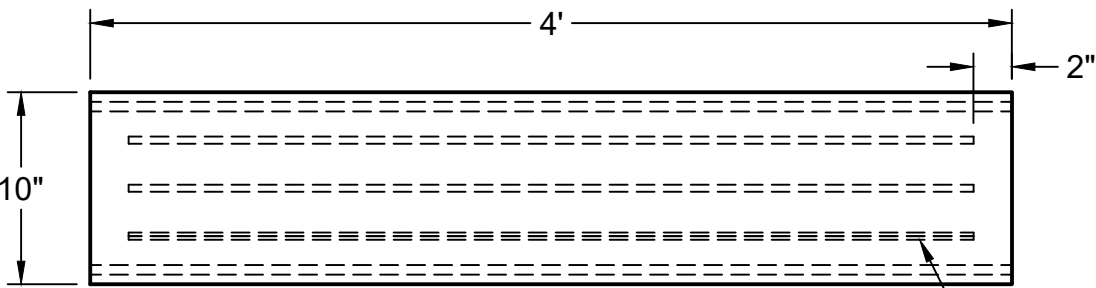
1:10

DRAWN BY:

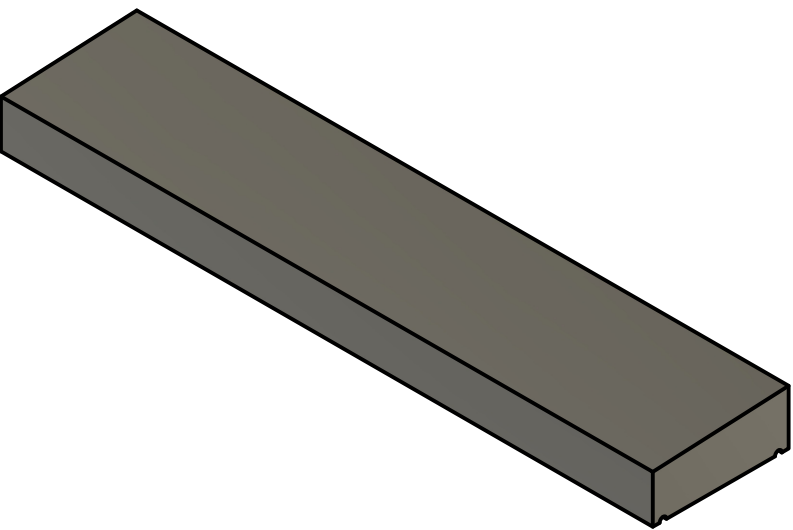
JD

- GENERAL NOTES
- #3 EPOXYCOATED REBAR IN ALL PROFILES (NOT SHOWN)
- STANDARD SPECIFICATION FOR ARCHITECTURAL CAST STONE
- ASTM A775/A775-19 REINFORCED W/ #3 EPOXY COATED REBAR
 - ASTM C1194 COMPRESSIVE STRENGTH 6,500 PSI TO 10,065 PSI- TEST RESULTS ATTACHED
 - ASTM C1195/C67 WATER ABSORPTION 4.3% TEST RESULTS ATTACHED
 - ASTM C666 FREEZE THAW 0.584% MASS CHANGE TEST RESULTS ATTACHED
- CAST STONE CONCRETE MIX FORMULA TYPICAL MIX
- ASTM C33 310LBS AGGEGATE ¾" GRADED DOLOMITIC LIMSTONE
 - ASTM C150 100LBS PORTLAND CEMENT-TYPE 1 WHITE
 - ASTM C979 PIGMENT EMPIRE BLENDED PIGMENTS LIMEPROOF
 - ASTMC494 12OZ ADVACAST 140-SUPERPLASTICIZER/ WATER REDUCER ADMIXTURE
 - ASTM 260 AIR ENTRAINMENT ADMIXTURE
 - ASTM C457 AIR CONTENT 4% - 6%
 - 44LBS OF TOTAL LIQUID-5 PARTS WATER/ 1PART PORTION VF774 POLYMER
 - WATER/ CEMENT RATIO-0.44

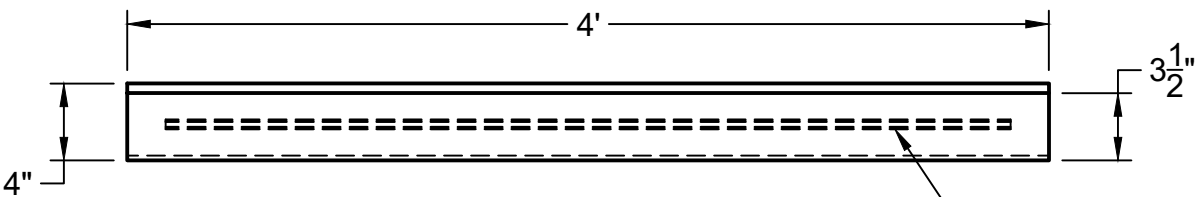
- FINISH INDEX
- FINISH: SMOOTH
 - COLOR: NATURAL GRAY



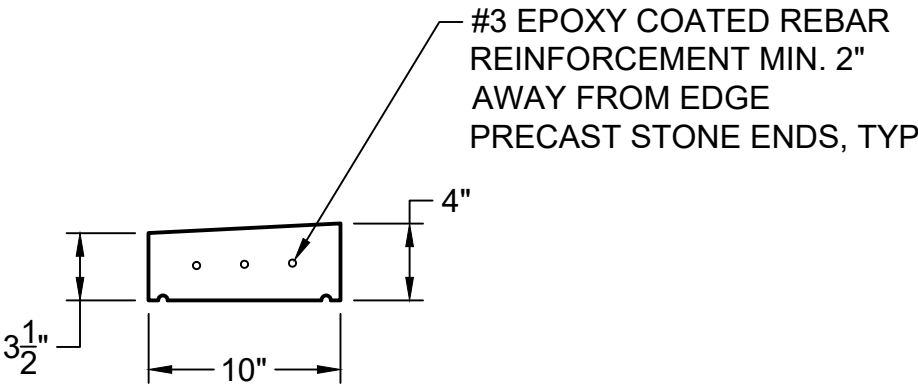
TOP VIEW



NE ISOMETRIC VIEW



FRONT VIEW



RIGHT SIDE VIEW

#3 EPOXY COATED REBAR
REINFORCEMENT MIN. 2"
AWAY FROM EDGE
PRECAST STONE ENDS, TYP

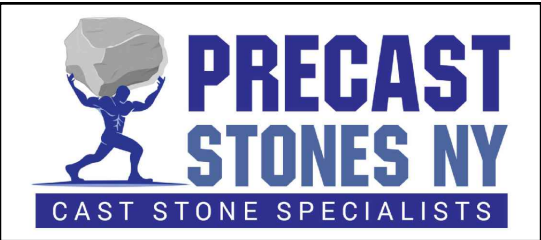
#3 EPOXY COATED REBAR
REINFORCEMENT MIN. 2"
AWAY FROM EDGE
PRECAST STONE ENDS, TYP

#3 EPOXY COATED REBAR
REINFORCEMENT MIN. 2"
AWAY FROM EDGE
PRECAST STONE ENDS, TYP

PROFILE: COPING STONE 10"
NTS

REVISIONS			
	5		
	4		
	3		
	2		
	1		
	NO.	DATE	COMMENTS

DRAWING	SHEET	SIZE: C
	1/10	



MANUFACTURED BY:
PRECAST STONES NY CORP
3275 GRACE AVENUE
BRONX, NY 10469
917-557-0949 Office 917200-1738
INFO@PRECASTSTONESNY.COM
PRECASTSTONESNY.COM

P.S./I.S.

PRECAST STONES
PROFILES

PROJECT:

<Project>

DRAWING TITLE:

Stones

DATE:

12/20/2025

SCALE:

1:10

DRAWN BY:

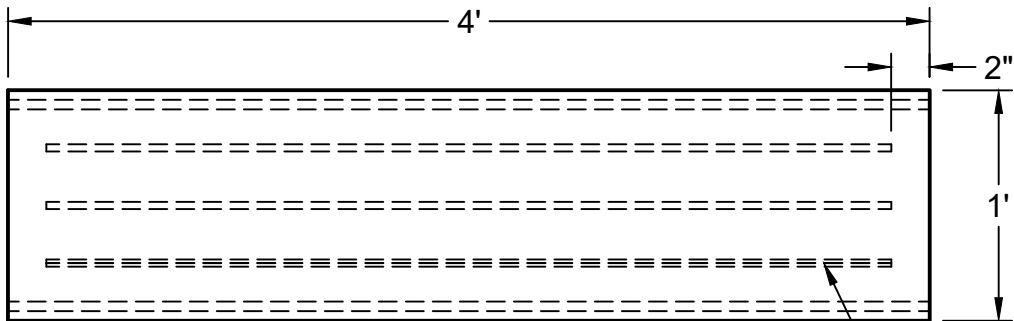
JD

GENERAL NOTES

1. #3 EPOXYCOATED REBAR IN ALL PROFILES (NOT SHOWN)
- STANDARD SPECIFICATION FOR ARCHITECTURAL CAST STONE
- 1.1. ASTM A775/A775-19 REINFORCED W/ #3 EPOXY COATED REBAR
- 1.2. ASTM C1194 COMPRESSIVE STRENGTH 6,500 PSI TO 10,065 PSI- TEST RESULTS ATTACHED
- 1.3. ASTM C1195/C67 WATER ABSORPTION 4.3% TEST RESULTS ATTACHED
- 1.4. ASTM C666 FREEZE THAW 0.584% MASS CHANGE TEST RESULTS ATTACHED
- CAST STONE CONCRETE MIX FORMULA TYPICAL MIX
- 1.5. ASTM C33 310LBS AGGEGATE ¾" GRADED DOLOMITIC LIMSTONE
- 1.6. ASTM C150 100LBS PORTLAND CEMENT-TYPE 1 WHITE
- 1.7. ASTM C979 PIGMENT EMPIRE BLENDED PIGMENTS LIMEPROOF
- 1.8. ASTMC494 12OZ ADVACAST 140-SUPERPLASTICIZER/ WATER REDUCER ADMIXTURE
- 1.9. ASTM 260 AIR ENTRAINMENT ADMIXTURE
- 1.10. ASTM C457 AIR CONTENT 4% - 6%
- 1.11. 44LBS OF TOTAL LIQUID-5 PARTS WATER/ 1PART PORTION VF774 POLYMER
- 1.12. WATER/ CEMENT RATIO-0.44

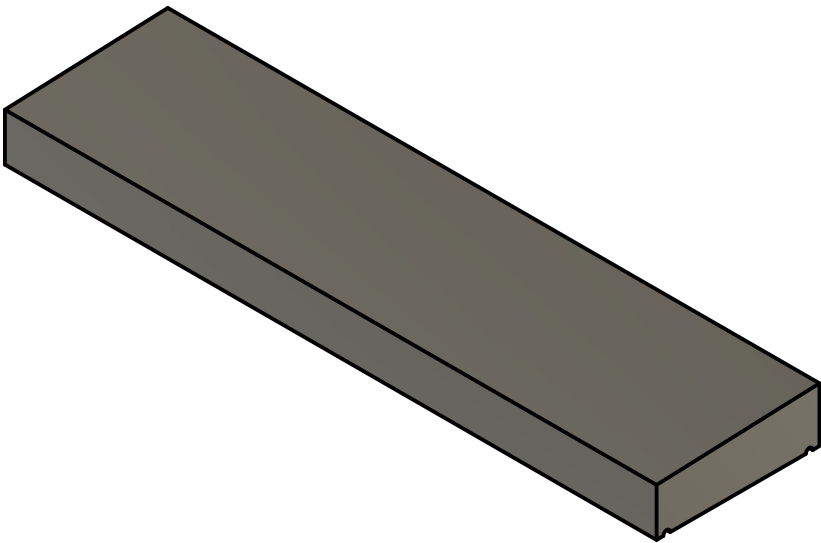
FINISH INDEX

1. FINISH: SMOOTH
2. COLOR: NATURAL GRAY

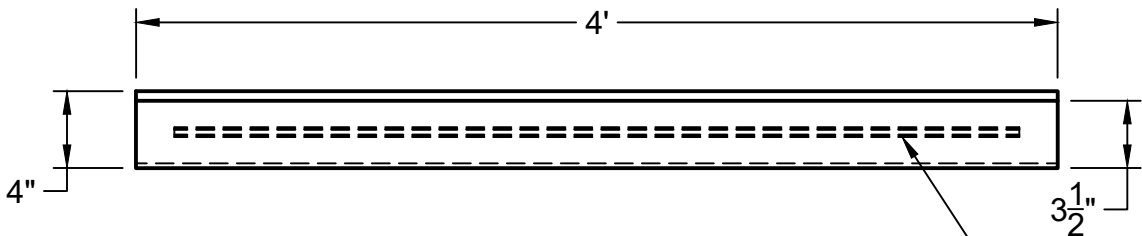


#3 EPOXY COATED REBAR
REINFORCEMENT MIN. 2"
AWAY FROM EDGE
PRECAST STONE ENDS, TYP

TOP VIEW

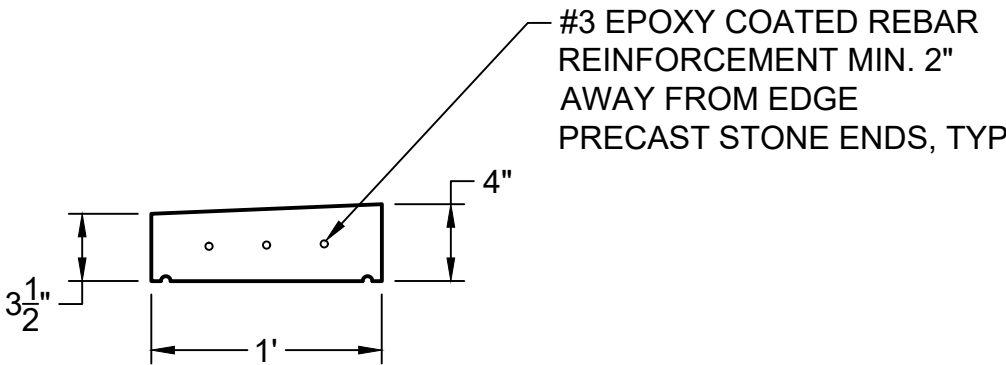


NE ISOMETRIC VIEW



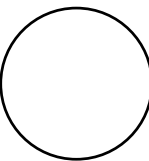
#3 EPOXY COATED REBAR
REINFORCEMENT MIN. 2"
AWAY FROM EDGE
PRECAST STONE ENDS, TYP

FRONT VIEW



#3 EPOXY COATED REBAR
REINFORCEMENT MIN. 2"
AWAY FROM EDGE
PRECAST STONE ENDS, TYP

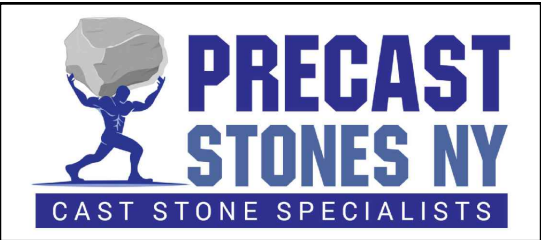
RIGHT SIDE VIEW



PROFILE: COPING STONE 12"
NTS

REVISIONS			
	5		
	4		
	3		
	2		
	1		
	NO.	DATE	COMMENTS

DRAWING	SHEET	SIZE: C
	2/10	



MANUFACTURED BY:
PRECAST STONES NY CORP
3275 GRACE AVENUE
BRONX, NY 10469
917-557-0949 Office 917200-1738
INFO@PRECASTSTONESNY.COM
PRECASTSTONESNY.COM

P.S./I.S.

PRECAST STONES
PROFILES

PROJECT:

<Project>

DRAWING TITLE:

Stones

DATE:

12/20/2025

SCALE:

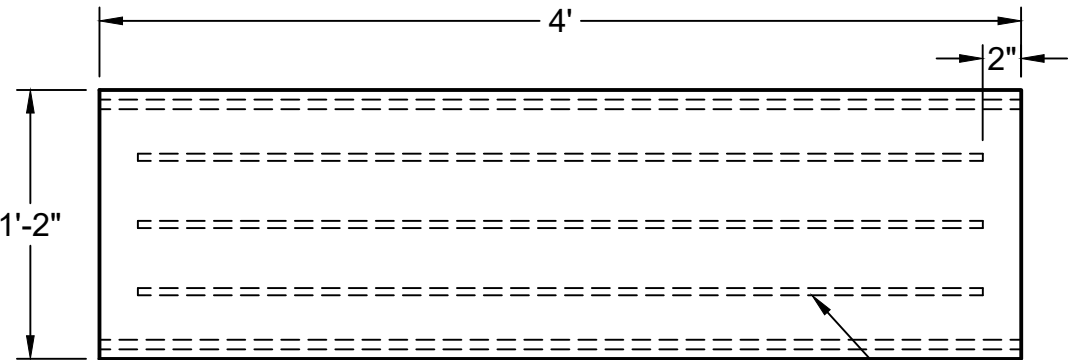
1:10

DRAWN BY:

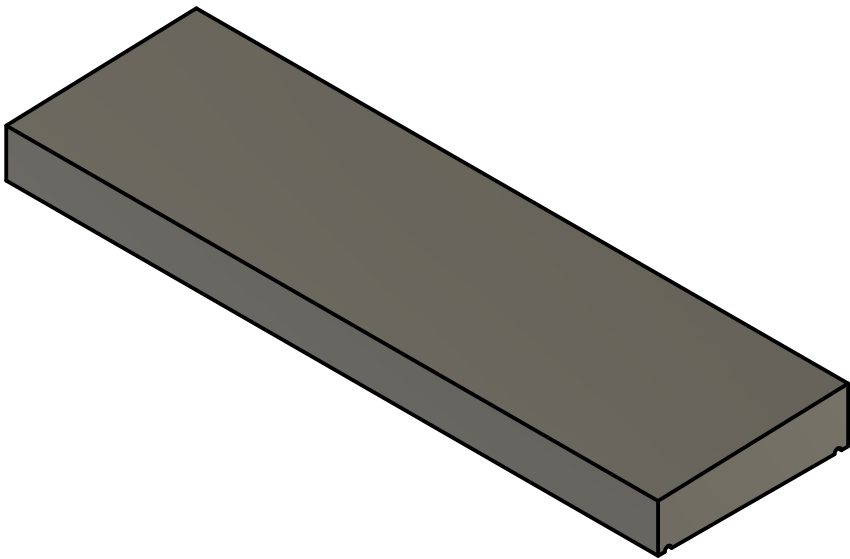
JD

- GENERAL NOTES
- #3 EPOXYCOATED REBAR IN ALL PROFILES (NOT SHOWN)
- STANDARD SPECIFICATION FOR ARCHITECTURAL CAST STONE
- ASTM A775/A775-19 REINFORCED W/ #3 EPOXY COATED REBAR
 - ASTM C1194 COMPRESSIVE STRENGTH 6,500 PSI TO 10,065 PSI- TEST RESULTS ATTACHED
 - ASTM C1195/C67 WATER ABSORPTION 4.3% TEST RESULTS ATTACHED
 - ASTM C666 FREEZE THAW 0.584% MASS CHANGE TEST RESULTS ATTACHED
- CAST STONE CONCRETE MIX FORMULA TYPICAL MIX
- ASTM C33 310LBS AGGEGATE ¾" GRADED DOLOMITIC LIMSTONE
 - ASTM C150 100LBS PORTLAND CEMENT-TYPE 1 WHITE
 - ASTM C979 PIGMENT EMPIRE BLENDED PIGMENTS LIMEPROOF
 - ASTMC494 12OZ ADVACAST 140-SUPERPLASTICIZER/ WATER REDUCER ADMIXTURE
 - ASTM 260 AIR ENTRAINMENT ADMIXTURE
 - ASTM C457 AIR CONTENT 4% - 6%
 - 44LBS OF TOTAL LIQUID-5 PARTS WATER/ 1PART PORTION VF774 POLYMER
 - WATER/ CEMENT RATIO-0.44

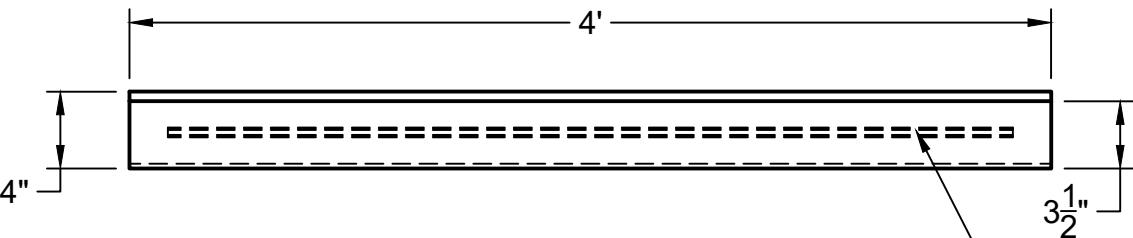
- FINISH INDEX
- FINISH: SMOOTH
 - COLOR: NATURAL GRAY



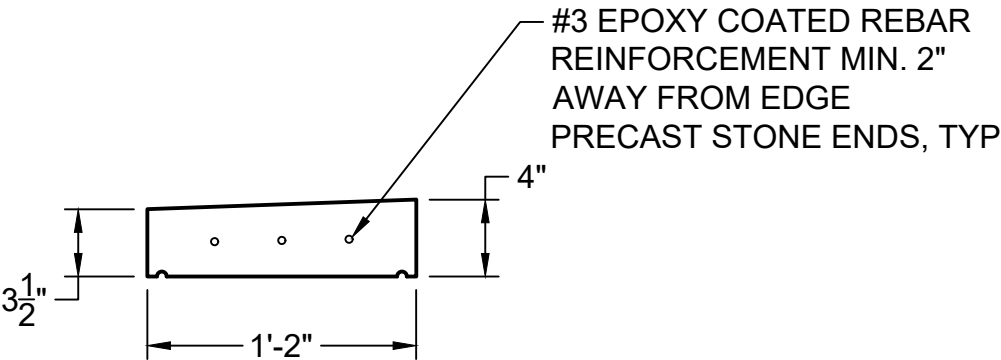
TOP VIEW



NE ISOMETRIC VIEW



FRONT VIEW



RIGHT SIDE VIEW

PROFILE: COPING STONE 14"
NTS

REVISIONS			
	5		
	4		
	3		
	2		
	1		
	NO.	DATE	COMMENTS

DRAWING	SHEET	SIZE: C
	3/10	



MANUFACTURED BY:
PRECAST STONES NY CORP
3275 GRACE AVENUE
BRONX, NY 10469
917-557-0949 Office 917200-1738
INFO@PRECASTSTONESNY.COM
PRECASTSTONESNY.COM

P.S./I.S.

PRECAST STONES
PROFILES

PROJECT:

<Project>

DRAWING TITLE:

Stones

DATE:

12/20/2025

SCALE:

1:10

DRAWN BY:

JD

GENERAL NOTES

1. #3 EPOXYCOATED REBAR IN ALL PROFILES (NOT SHOWN)
- STANDARD SPECIFICATION FOR ARCHITECTURAL CAST STONE
- 1.1. ASTM A775/A775-19 REINFORCED W/ #3 EPOXY COATED REBAR
- 1.2. ASTM C1194 COMPRESSIVE STRENGTH 6,500 PSI TO 10,065 PSI- TEST RESULTS ATTACHED
- 1.3. ASTM C1195/C67 WATER ABSORBTION 4.3% TEST RESULTS ATTACHED
- 1.4. ASTM C666 FREEZE THAW 0.584% MASS CHANGE TEST RESULTS ATTACHED
- CAST STONE CONCRETE MIX FORMULA TYPICAL MIX
- 1.5. ASTM C33 310LBS AGGEGATE ¾" GRADED DOLOMITIC LIMSTONE
- 1.6. ASTM C150 100LBS PORTLAND CEMENT-TYPE 1 WHITE
- 1.7. ASTM C979 PIGMENT EMPIRE BLENDED PIGMENTS LIMEPROOF
- 1.8. ASTMC494 12OZ ADVACAST 140-SUPERPLASTICIZER/ WATER REDUCER ADMIXTURE
- 1.9. ASTM 260 AIR ENTRAINMENT ADMIXTURE
- 1.10. ASTM C457 AIR CONTENT 4% - 6%
- 1.11. 44LBS OF TOTAL LIQUID-5 PARTS WATER/ 1PART PORTION VF774 POLYMER
- 1.12. WATER/ CEMENT RATIO-0.44

FINISH INDEX

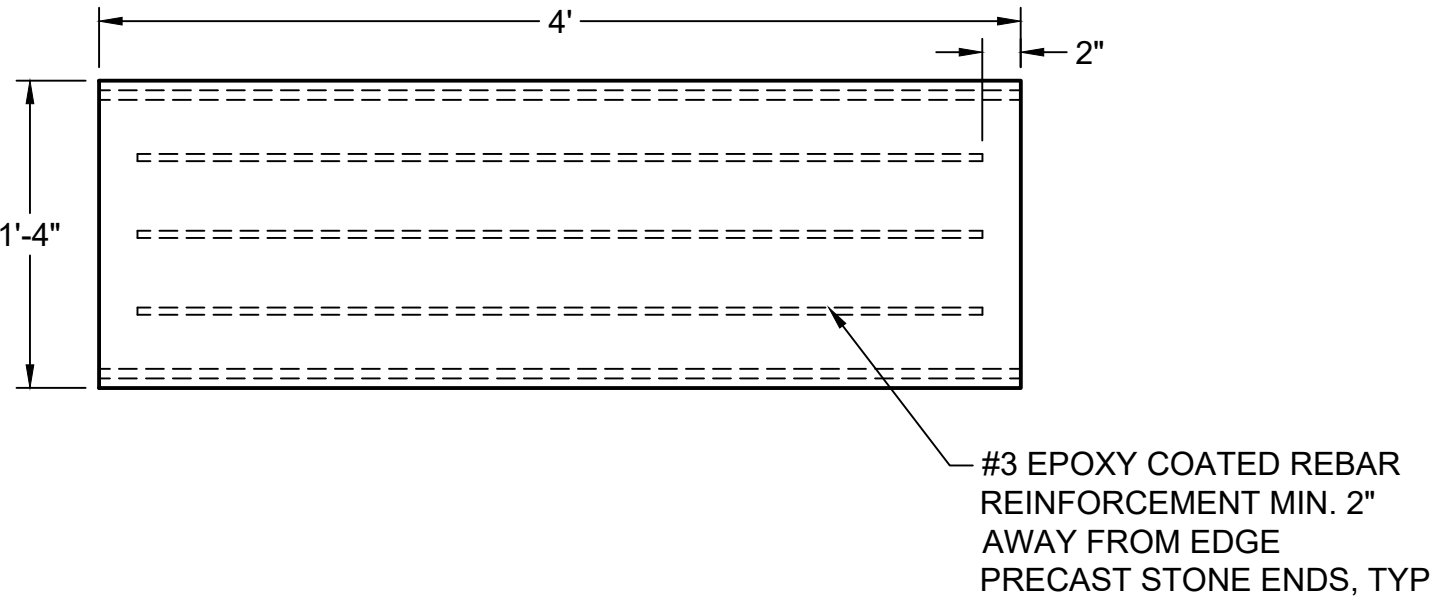
1. FINISH: SMOOTH
2. COLOR: NATURAL GRAY

DRAWING

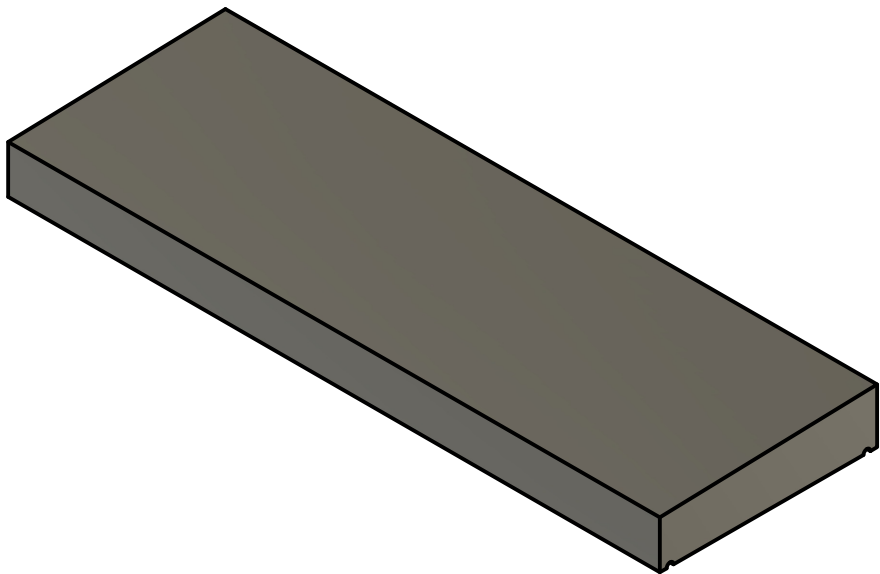
SHEET

SIZE: C

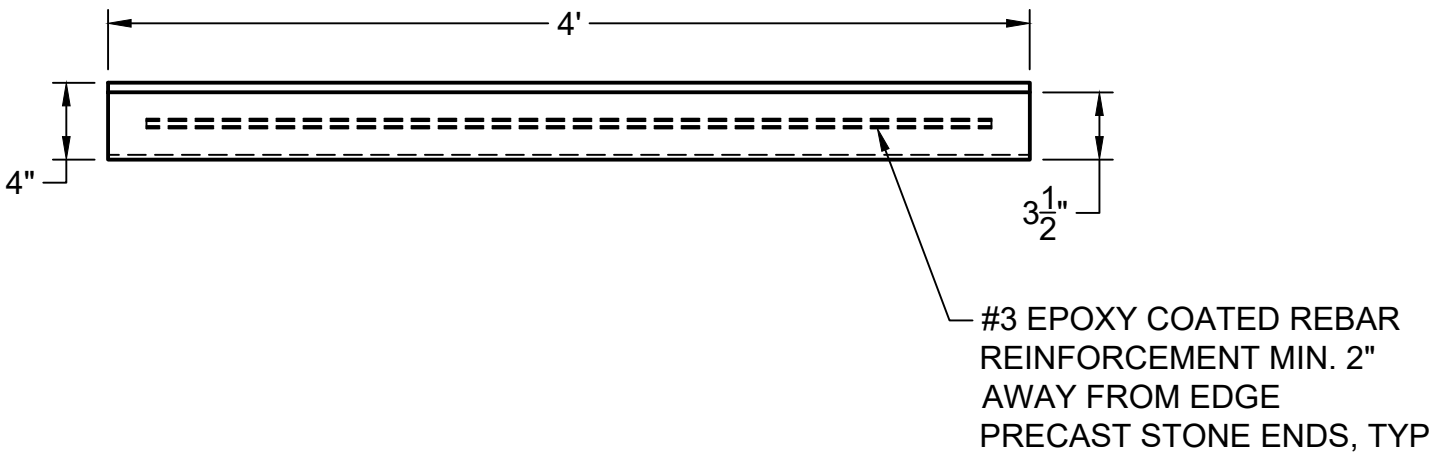
4/10



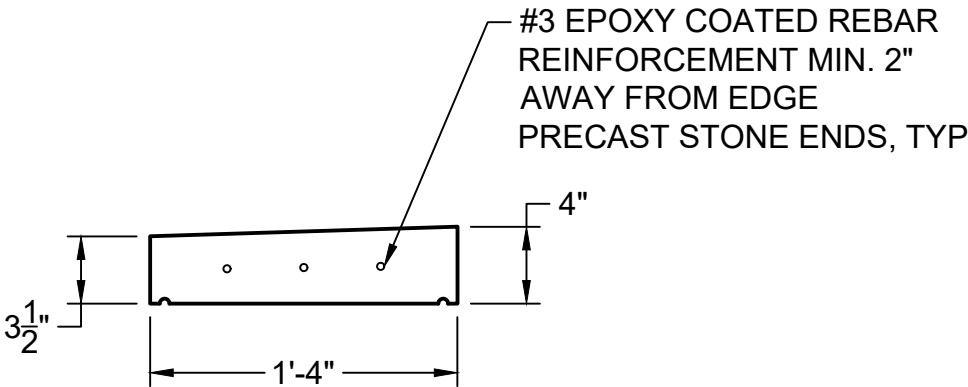
TOP VIEW



NE ISOMETRIC VIEW



FRONT VIEW



RIGHT SIDE VIEW

PROFILE: COPING STONE 16" NTS

REVISIONS			
	5		
	4		
	3		
	2		
	1		
	NO.	DATE	COMMENTS